



# GLG Social Impact

Social Impact Fellowship Assessment & Measurement Framework

January 2022

## *Executive Summary*

# Executive Summary | Project Methodology and Objectives

## Methodology

### Design Measurement Framework

Collaborate with program leadership to develop a list of key outcomes. Organize and prioritize these outcomes based on GLG’s priorities and areas where GLG can have maximum impact.

### In Depth Interviews

Interview fellows from several cohorts to understand the expectations they had for the fellowship, the outcomes that resulted from their time in the fellowship, and changes to their organizations’ impact on society.

### Program Impact Survey

Develop and field a survey designed to measure the fellowship’s impact on fellows, organizations, and society.

### Refine Measurement Framework

Hold a working session with program leadership to review evaluation results and adjust the program’s measurement framework moving forward.

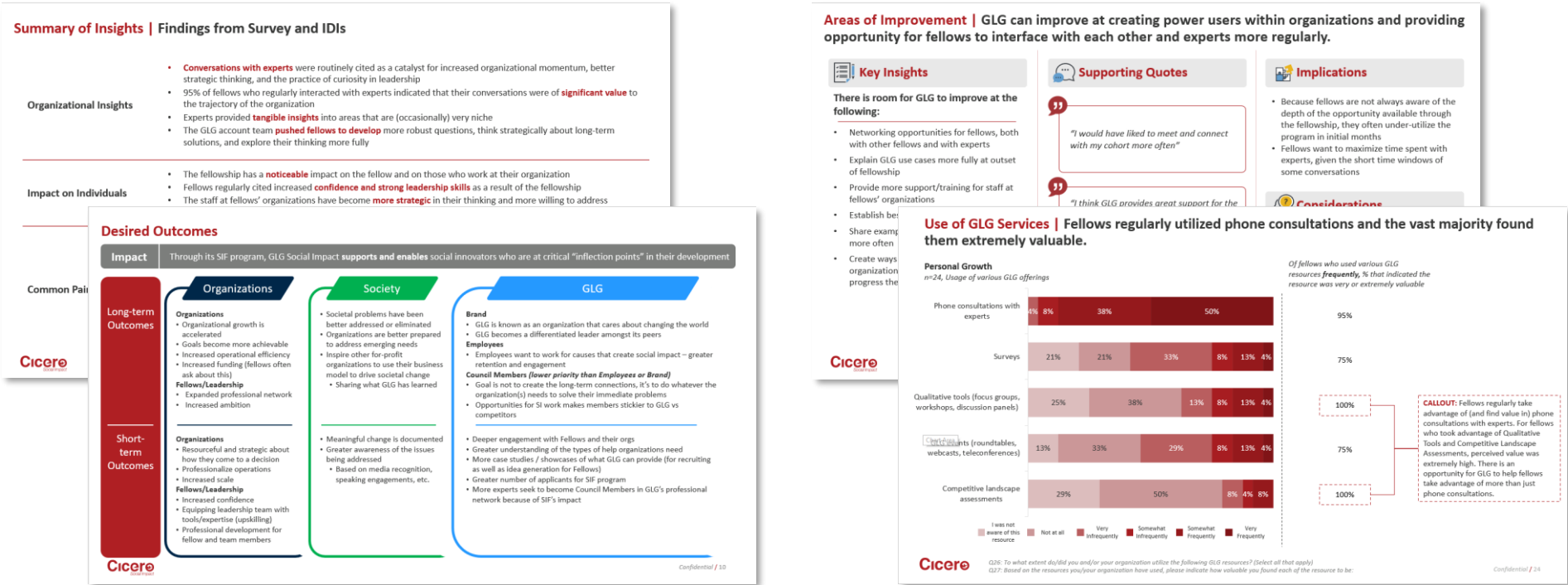
## Objectives

Assess the impact of the program on Fellows and GLG to date (comprising the 2015 – 2020 cohorts).

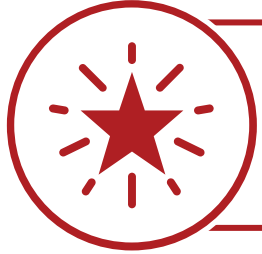
Develop a more robust measurement framework for the Fellows program going forward that specifies desired outcomes, metrics used to measure each outcome, and the methods used to gather measurement data on an ongoing basis.

Provide preliminary insights regarding program adjustments that GLG Social Impact implement to increase impact, both in the near- and long-term

## Key Deliverables



## Executive Summary | Key Evaluation Findings



### SUCCESS

Fellows indicate that GLG has been instrumental in improving their organizations' abilities to **achieve organizational goals** and **address unexpected challenges**.



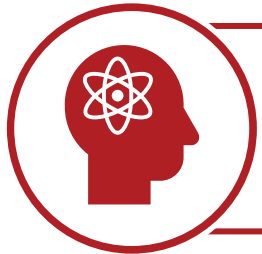
### IMPACT

Access to GLG's Network Members was extremely valuable in **accelerating the impact** that organizations have on the societal issues that they are working to address.



### GROWTH

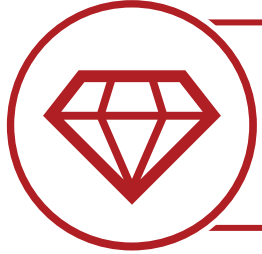
In addition to achieving organizational goals, GLG fellows indicate that the program helped them improve their **team's capacity and knowledge** and their own capacity to perform as a leader.



### DEVELOPMENT

GLG users report improvement in their own skills, expansion of their professional network, **increased positive impact & ability as a leader**, personal drive to create change, and achievement of their goals.

## Executive Summary | Areas for Growth



### VALUE

Fellowship participants state that the fellowship was more successful at meeting their **organizational expectations** than their personal ones.



### ADOPTION

It is critically important to **set up** the participating organization for success through robust training, processes, and participant selection.



### INSPIRATION

A common struggle for participants is how best to leverage GLG's unique resources; increased **sharing of best practices** can alleviate this.



### METRICS

Opportunities exist to **better measure** the Fellowship's impact on its participating organizations, and in turn the success of the program.

*To request more details, please email [GLGsocialimpact@glgroup.com](mailto:GLGsocialimpact@glgroup.com)*